

1-10 Blackfriars

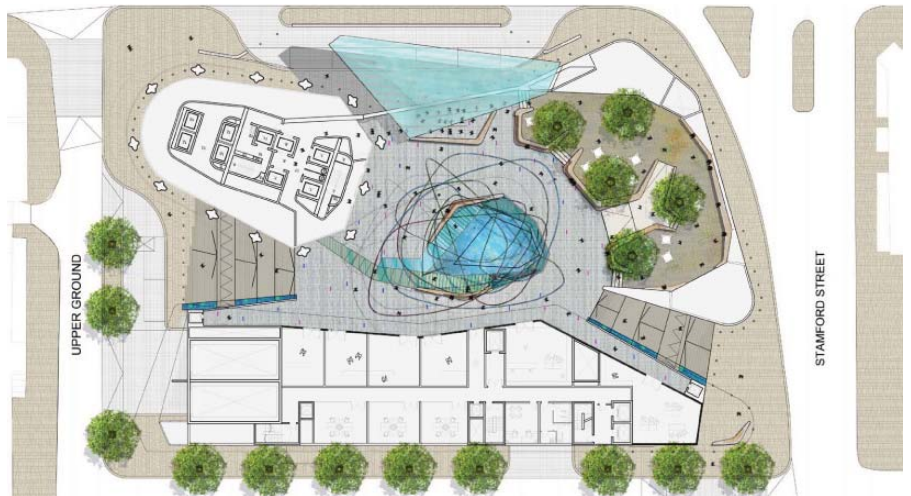
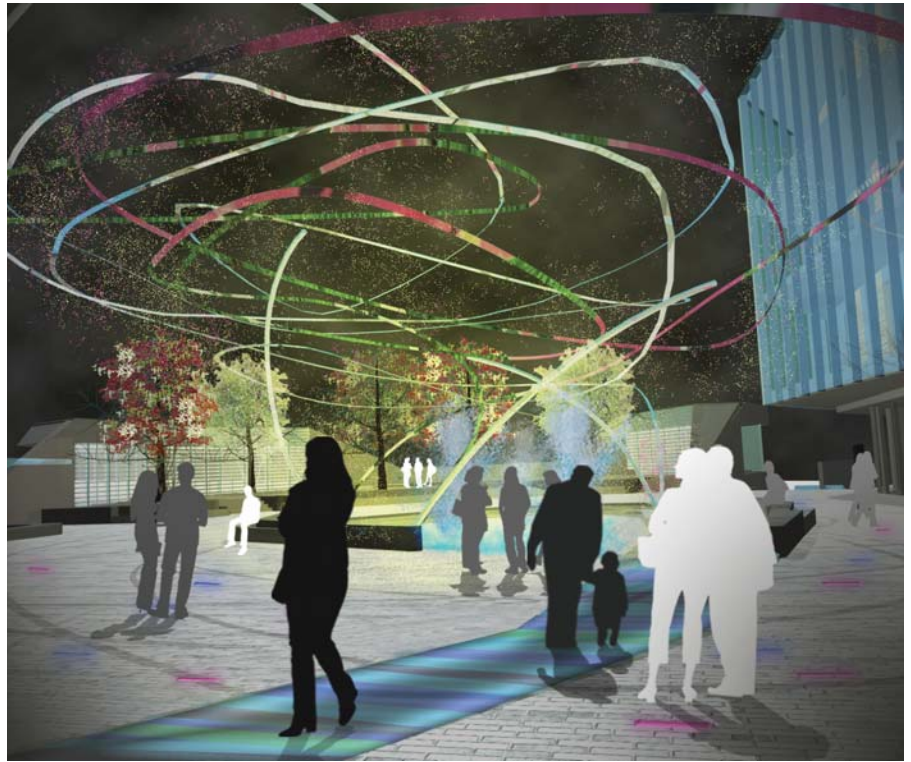
London SE1 UK

The objective is to create a high-quality landscape environment that will become a major tourist attraction, provide a new public space for London and a cherished home for residents, and set a benchmark for modern design within an inner-city borough.

This new residential and luxury hotel development features a 51-storey tower comprising a hotel, residential apartments and public viewing deck (the Sky Deck). The Plaza provides public open space at the foot of the tower, connecting to the adjoining streetscape.

Local artists will embellish the surface treatment within the Plaza spaces, and the two main public routes up to the Sky Deck and Plaza will be enhanced by specific treatments of surfaces and details that will give continuity from street level up to the terraces.

Visitors will reach the Sky Deck by one of two ramps, adding a sense of drama to the experience. From there, they can sit back and admire the tower, climb a further series of ramps to the restaurant, or enter the building and take an express elevator to the top of the attraction.



Site Area: 0.6 Hectares
Client: Beetham Organisation
Architects: Ian Simpson Architects
Engineers: WSP Cantor Seinuk
Overall Project Value: £600 million



Top: View of Plaza at night
 Above: Landscape masterplan
 Left: Sectional elevation through Plaza