

Hangar 45

Yatesbury, Wiltshire UK

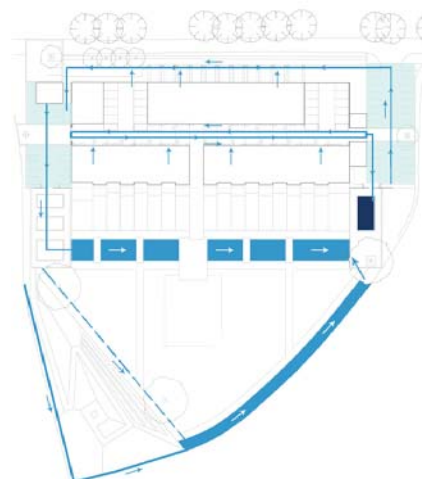
Hangar 45 is a mixed-use scheme situated on the site of the former Yatesbury airfield on the Wiltshire plain. The surrounding landscape forms part of the North Wessex Downs Area of Outstanding Natural Beauty (AONB), and the regional landscape is marked by sites of ancient prehistoric interest. In addition to this heritage, listed military buildings dating from the First and Second World Wars are present on site.

The spaces, levels and topography presented by the landscape proposals draw on the landscape and historical context to create a unique environment for the scheme in harmony with its surroundings. The proposals combine housing with an inspirational work setting, seasonal interest and attractive spaces for leisure and recreation.

The design places an emphasis on environmental sustainability and technological innovation. Productive gardens, fruiting trees, on-site composting, and rainwater collection and purification in reed beds will contribute to an ecologically sound environment for the scheme. During construction, materials will be selected where possible from renewable and local resources.



Site Area: 1.5 Hectares
Client: Spaceworks Ltd
Architects: Mitchell Taylor Workshop
Engineers: Structures 1
Quantity Surveyors: PSP Consultants
Overall Project Value: £6.5 million



Top: View of central street
image jointly created with Daniel Flamsteed
 Above: Plan of central street
 Left: Masterplan set within aerial photograph;
 Water strategy