

Walsall Waterfront

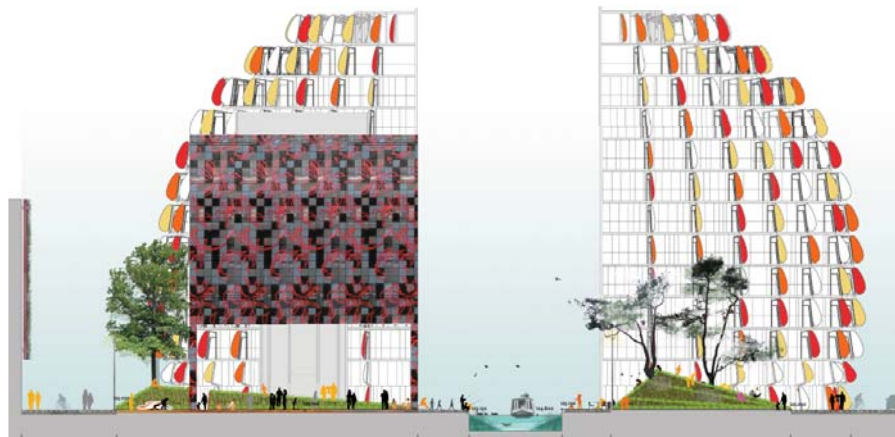
UK

Grant Associates were appointed as landscape architects for this ambitious project to regenerate Walsall town centre. The project aims to create a Walsall that people can be proud of, with a landscape environment that promotes a new focus on community and residential development and contributes to the quality and diversity of the neighbourhood.

The concept interweaves modern architectural icons into the public realm, grounding the new development by drawing on the industrial heritage and geometry of the canal. A series of landscape layers establish a clear spatial hierarchy focused around a series of Squares.

The Event Square is seen as the main public realm hub. It is a flexible space for meeting, play, performance, peace and relaxation, flanked with soft grass earthworks. The Soft Square comprises a series of tilted grass plinths, terraced to activate the canal towpath edge and gently reclining to face the sun. The canal basin forms the reflective heart of the Wet Square.

Site Area: 1.2 Hectares
Client: Urban Splash
Architects: SMC Alsop
Engineers: Adams Kara Taylor
Quantity Surveyors: DBK Back
Overall Project Value: £1.6 million



Top: Landscape masterplan
 Above: Perspective view across canal basin and the Soft Square
 Left: Sectional elevation